

FINGERING CHART FOR THE FLUTE WHEN USING THE GLISSANDO HEADJOINT

For every note on the flute from its low B to the fourth octave D, the maximum possible range of glissando for each pitch is given. Notation for downwards glissandi and upwards glissandi are presented. When the Glissando Headjoint® is all the way in, towards the body of the flute—“home base”—the flute is in tune as a normal flute and every fingering produces its expected pitches.

Fundamentally, a downwards glissando begins with the Glissando Headjoint® all the way in towards the body of the flute and the flutist playing the note that starts the glissando. The flutist then extends the Glissando Headjoint® until the desired end pitch is reached.

An upwards glissando begins with fingering of the note that the glissando will reach and with the Glissando Headjoint® extended as far as necessary to play the beginning note of the glissando.

Intonation Symbols:

♯ = Quarter sharp

♭ = Quarter flat

↑ = Slightly sharp

↓ = Slightly flat


 or
 
 = glissando

Notation for upwards glissando arriving at a regular fingering:

Fingered pitch with Glissando Headjoint® extended to notated pitch



Finger C♯ with Glissando Headjoint® extended to A♭



Play A♭ and slide headjoint inwards to "home base"

The Glissando Headjoint® is then moved to “home” position (all the way in towards the body of flute). The glissando is complete when it reaches the arrival note.

Notation for a downwards glissando using a special fingering:

“In”: Glissando Headjoint®
in home position



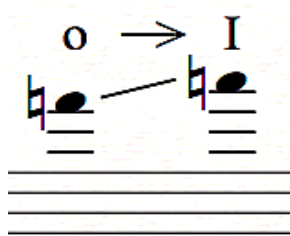
“Out”: Glissando Headjoint®
extended to produce notated pitch

Fingering:



Notation for an upwards glissando using a special fingering:

“Out:” Glissando
Headjoint® extended to
produce notated pitch



“In”: Glissando Headjoint®
in home position

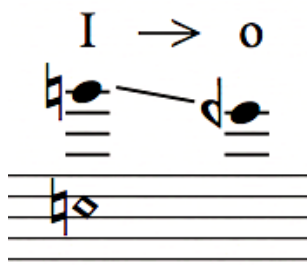
Fingering:



Notation for a downwards glissando using a harmonic fingering:

◊ = fingering of harmonic

Glissando Headjoint® in
“home” position



Glissando Headjoint® pulled out
to notated pitch

Notation for an upwards glissando using a harmonic fingering:

Glissando Headjoint®
pulled out to notated pitch



Glissando Headjoint® pushed in
to “home” position